

# **SHEET METAL WORKING**

We put passion into bringing your ideas to life!



## ABOUT US

Our story begins in 1997 when Mauro and Daniele, founded the DM workshop in Porcia (Pordenone, Italy), specialising in **sheet metal processing**.

**Human and financial commitment** mark the path of constant growth for our company which enables us today to create **integrated medium-light metalwork solutions** that are used in different sectors, in **Italy and abroad**.

Thanks to **structured workflows**, constantly monitored on board the machine by **highly specialised operators**, each item we process is the result of a quest for excellence, capable of fulfilling even the most demanding orders, which require **the metal components and the relative finishes to be of high quality**.

The technical specialisation of our staff combines well with the **well-organised logistics of our warehouse**, through which the raw materials are coded so that they can be quickly traced.

## OUR MISSION

**“We give sheet metal personality, creating quality products”**

This is the motto that has always accompanied our work and has allowed us, over time, to reach a high level of sheet-metal processing expertise, to create **metal components of a very high quality standard**.



We are a **UNI EN ISO 9001:2015** certified company, guaranteeing manufacturing quality and management that aims to constantly improve company standards and results.

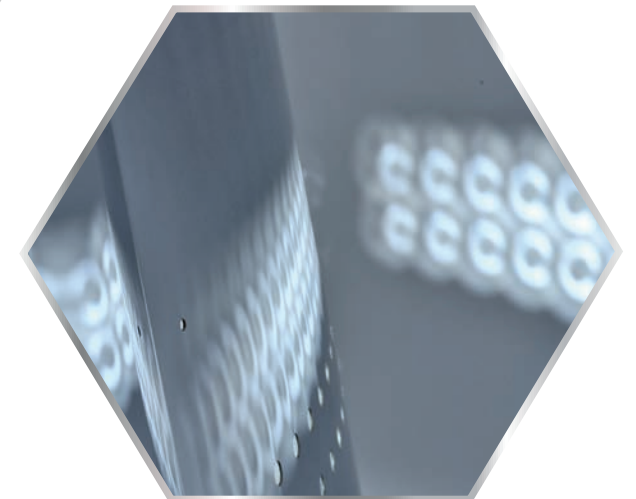
## OUR SECTORS OF USE

Thanks to a **large machinery inventory** and to **highly specialised technical staff**, we manage the whole production chain to create products or semi-finished articles, to be used in **various industrial sectors**, destined for the European market and Switzerland. DM operates in various sectors, including some key references:

Professional furniture



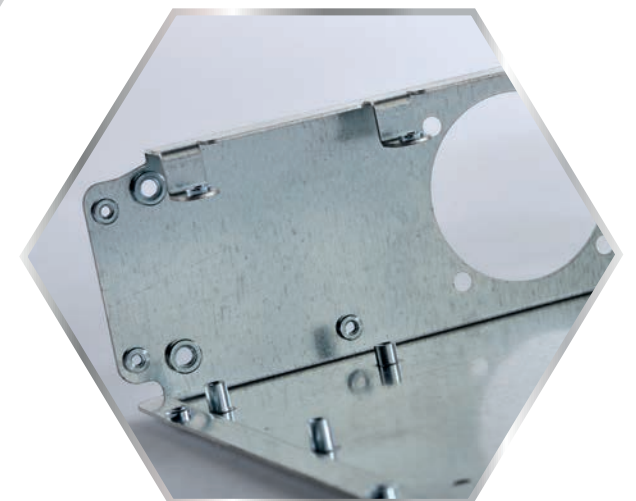
Domestic furniture



Medical



Electronics



Vending Machines







The new Amada EML 2515 AJ combines the benefits of fibre laser cutting and electric punching with an automated loading and unloading system. A concrete step forward in the technological renewal of the sheet metal sector, it ensures greater flexibility in machining operations and improved performance in both cutting quality and the execution of even complex forming.







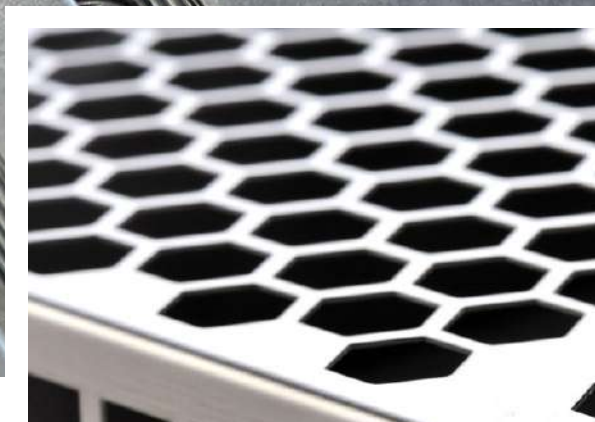
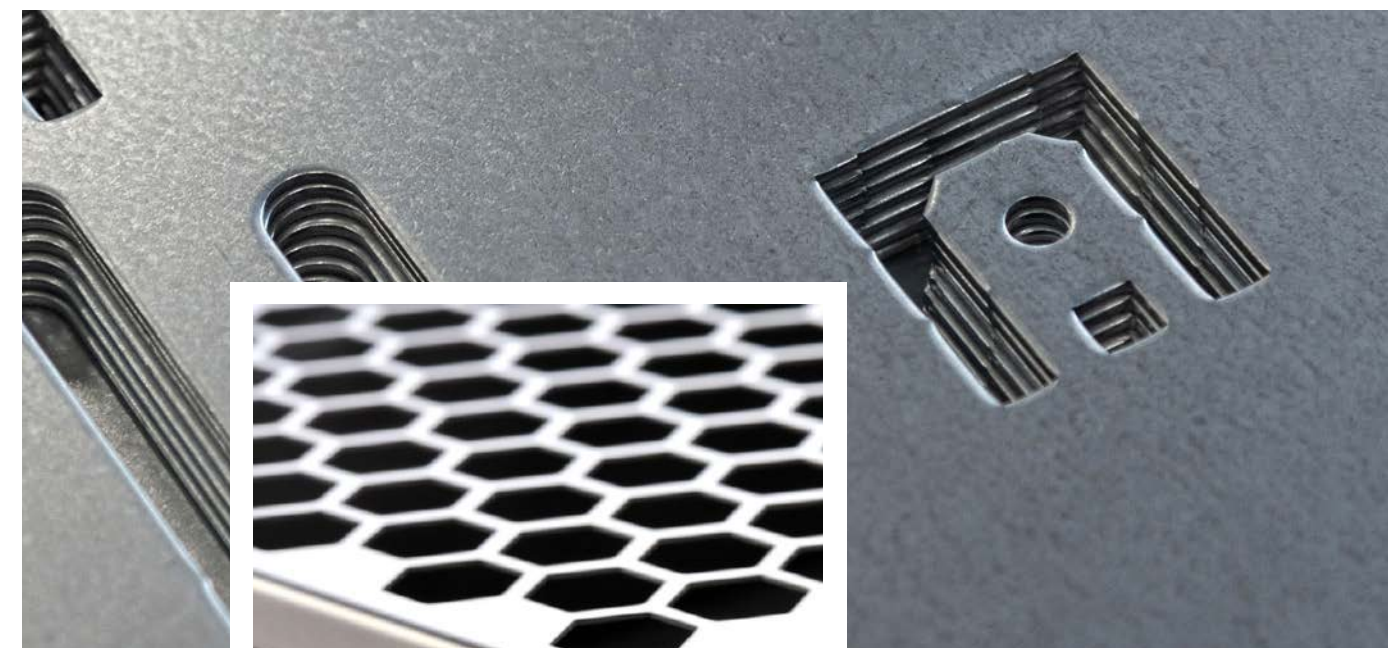
# LASER CUTTING

Our production department is equipped with **laser cutting machinery** paired with **systems to automatically load and unload** the flat sheet metal. Laser technology, now widely used in sheet-metal processing, guarantees optimum cut quality and flexibility in processes with many applications.



# PUNCHING

Our **punching processes** allow us to create very unusual shapes in **short times** and with **reduced production costs**, thanks to the synergistic combination of: precision, operating quality, flexibility and perfect adherence to the initial design.

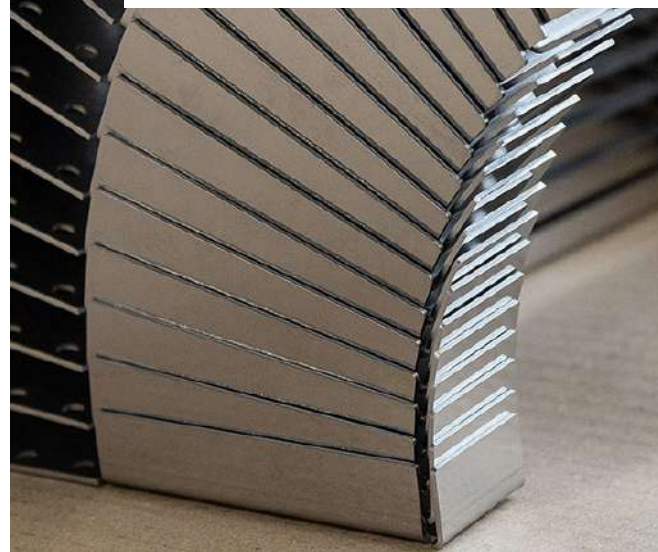






# BENDING

The fact that we own several **computer numerically controlled (CNC) bending machines** allows us to accurately control the bending angle of each individual piece for a higher quality finished product.



# PANELLING

We own a **semi-automatic panelling machine** which means that we can be versatile and can adapt well to a variety of panel production requirements, ensuring **flexible use**, **speedy execution** of the components and **precision in developing the bend**.







# WELDING

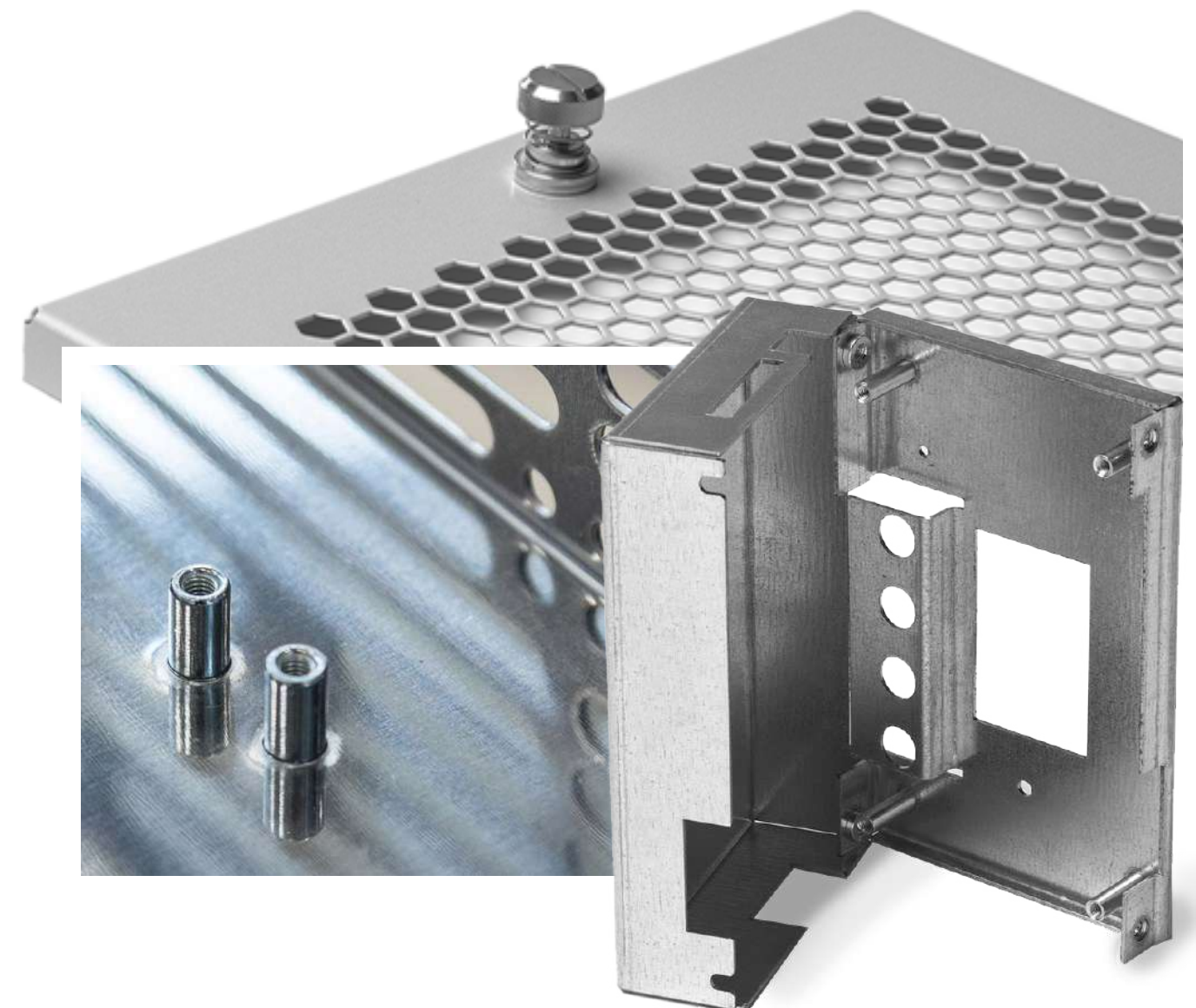
Alongside more technological metal processing, we also offer a **sheet-metal welding** service. Our welding department, which combines **artisan-level manual skill** and the use of **advanced machinery**, can meet any needs that require **electric welding** and **spot welding** on semi-finished products.



# OTHER PROCESSES

To complement our standard sheet-metal processing (cutting, punching, bending and welding), over the years we have developed a great deal of experience in carrying out complementary processes that involve **assembly**, **technical applications** and **installing various types of components**, as well as ancillary services such as **surface treatments** (painting, galvanising, etc.).

The **packaging of the various components** is another of our strong points. It allows us to supply the product required in its final form, saving time and money.





## **DM DI ONGARO E PERISSINOTTI SRL**

Via\_Pieve, 5 - Z.I. - 33080 Porcia (PN) Italy

Tel\_(+39) 0434 591162

Fax\_(+39) 0434 591826

EMAIL\_info@dmlavorazioni.it

WEB\_www.dmlavorazioni.it